

A word from Mpumi Sithole



Mpumi Sithole, executive head for corporate affairs, Thungela

At Thungela, we believe that business value is found in what we produce, the partnerships we build, and the lives we touch.

This edition of Umphakathi is filled with stories that showcase what is possible when we collaborate with our teams, partners, and host communities to create a lasting and meaningful impact.

Whether through early childhood education, access to healthcare, or support for small businesses, each initiative demonstrates a collective commitment to creating value that benefits many, not just a select few.

Our commitment to inclusive development means recognising the importance of investing in people at every stage of life especially the next generation.

As we honour Youth Month, we are reminded of the importance of listening more, collaborating better, and doing

our part to ensure no young person is left behind.

This edition celebrates the spirit of the young people who are courageously shaping their futures, the community leaders and organisations who walk alongside them, and the everyday moments that remind us why this work matters.

We are particularly proud to highlight how informal economies are being supported and how essential services, such as water, sanitation, and health-care, are being strengthened. These are not just corporate commitments; they are human ones built on trust, shared responsibility, and a belief in what we can achieve together.

Thank you to everyone who continues to play a role. These stories remind us that when we mine with care, lead with empathy, and walk in partnership, we create change that endures beyond any operation.

In this issue



Young people turn their skills into real economic opportunities

Page 02



New sports gear enables new era for youth teams in Mgewane and Kromdraai

Page 05



Old gumboots restore dignity for school learners

Page 19



Thungela is backing young ambition with real opportunities *When young people rise, communities thrive*

Young people have big dreams. However, finding work, starting a business, or getting hands-on experience is not always easy. That's why Thungela works closely with local organisations to support young people around in the various sites including Khwezela, Goedehoop and Greenside Collieries, helping them learn practical skills, grow their confidence, and unlock real opportunities. These partnerships aim to tackle unemployment while building a new generation of entrepreneurs, skilled workers, and changemakers.

At Thungela, we are committed to creating long-term value for the communities where we operate.



Our focus goes beyond compliance. It is about empowering people and helping them reach their full potential through our programmes and investments.



Learning tech skills in eMalahleni

In November 2024, Khwezela Colliery extended its coding and robotics programme with the launch of a new technopreneur initiative, developed in response to high youth unemployment and to help young people turn digital skills into real

economic opportunities. The initiative engaged 10 local youths, four from Clewer, four from Mgewane, and two from Schoongezicht, who joined a six-week training course aimed at equipping them with practical skills, tools, and confidence to explore careers in technology or start their own businesses.

The initiative was supported by Proxa,

a water treatment company that partnered with Khwezela to donate 10 laptops. This contribution ensured that each participant had access to the right tools and helped turn the training into a real springboard for innovation, learning, and entrepreneurship.

The training ended with a profit competition, where participants applied their new skills in real business environments, resulting in an increase in market sales and greater interest in their products and services.

The impact of the technopreneur programme has continued to grow. Two of the participants are now working as coding and robotics facilitators at AfriCAN Code, a continent-wide initiative that teaches digital skills and supports youth-led learning. Their success is a clear sign of what is possible when the right support meets young talent.

Khwezela is now developing a mentorship plan to keep walking alongside the participants as they grow their businesses and build their futures.

Basic electrical training programme in Middelburg



Meanwhile, in Middelburg, Goedehoop Colliery partnered with Strata Worldwide and ExcelGrow Group Holdings to equip young people with hands-on electrical skills, helping them bridge the gap between classroom learning and real-world job readiness.

Strata Worldwide, a global safety and technology company with a strong presence in South Africa's mining sector, brought technical expertise and certification support. ExcelGrow, a local training provider that specialises in artisan and skills development, helped design and deliver the programme, ensuring it met national training standards and responded to real industry needs.

The three-week course, implemented between October and November 2024, focused on basic electrical skills that could open doors to work in sectors such as construction, manufacturing and energy, as well as skills to equip them to identify and capitalise on opportunities within their community. The programme was valued at R340,000, covering stipends for participants, transport fees for three weeks of training, and an award ceremony.

Twenty-five (25) young people were

selected based on their qualifications, enthusiasm, and potential. The cohort has a diverse range of participants, many of whom had qualifications in electrical engineering, ranging from N1 to N6 levels.

These were young people with drive and knowledge who simply needed the opportunity to apply their skills. With the support of strategic partners, we were able to help turn that potential into real opportunity.

The programme closed off with an awards ceremony which recognised five participants, who received nationally endorsed certificates, formally recognising their successful completion of the training, endorsed by Strata Worldwide and in partnership with ExcelGrow Group Holdings and Thungela.

The certificates will help them stand out as work-ready candidates in the job market.

Supporting the Kuyenzeka Youth Centre in Klarinet

In Klarinet, eMalahleni, the Kuyenzeka Youth Centre has become a trusted space where young people can access career guidance, work readiness and life skills, all aimed at helping them access opportunities and take the next steps with confidence.

In acknowledging the centre's role in the community, Greenside Colliery donated resources to Kuyenzeka to strengthen its ability to serve local youth. These included a generator to ensure the centre could remain open during power cuts, along with seven chairs and seven tables to create a comfortable learning environment and a printer for administrative tasks.

Beyond physical resources, the partnership also included technical support, with Greenside offering



guidance and expertise on how the centre could obtain accreditation for its programmes, ensuring the training it provides is recognised and impactful.

"Spaces like Kuyenzeka are incubators of hope. "They are places where young people find direction, purpose and encouragement," said Lebogang Raboshaka, social performance officer at Greenside Colliery. Our partnership is helping shape a future where local youth feel equipped and supported".



Thungela's human rights commitment: Turning policy into practice

Human rights are the foundation of dignity, equality, and opportunity. At Thungela, we are committed to respecting these rights, guided by the UN Guiding Principles on Business and Human Rights and rooted in our values and day to day operations.

In this edition, we focus on the right to education, which is key to unlocking opportunity, and share how, as a business, we are working with communities to help make it real and meaningful. Education is a key part of our social-economic development approach because we understand that a nation's future is in the hands of its children.



The right to education: **Creating opportunities through learning**

Everyone has the right to basic education. At Thungela, we believe that quality education builds informed and stronger communities, which is why we invest in programmes that support learners, teachers, and schools.

Our efforts include:



School infrastructure

We invest in building and renovating classrooms, sanitation facilities, and learning spaces in host communities to provide a better learning environment.

01.

02.

Bursaries

We provide financial support to students pursuing higher education, especially in fields such as engineering and science.



Early childhood development

Supporting ECD centres to ensure children start their learning journey with the right foundation.

03.

04.

Quality education and educator development

We are currently running a five-year education initiative in collaboration with the Mpumalanga Department of Education, aimed at improving literacy, numeracy, school readiness, and educator development.



Commitment to human rights

To help protect human rights, we have made it easy for people to speak up. Concerns can be reported through human resources, a formal grievance process, or anonymously through our **HAIBO! Tip-offline**, which is run by an independent external company.

The line is available to employees, contractors, suppliers, and community members and can be used to report any unethical or unsafe behaviour.



Free Call: 0800 555 117



Email: Thungela@tip-offs.com



Website: www.tip-offs.com

Reports are treated with care, urgency, and in the language of your choice.



Sport, space, and self-expression



Human rights are not abstract; they show up in everyday life. The right to play, participate, and belong is especially important for young people, as it shapes not only their physical well-being but also their confidence, connection, and future possibilities.

That is why, in partnership with Proxa, Khwezela Colliery supported two community sports teams in Mgewane and Kromdraai, both located in the eMalahleni Local Municipality.

In Mgewane, the Masiphumelele Youth Netball Team gives young girls more than just a space to compete. It's a place to build friendships, resilience, and confidence. To support their journey, Khwezela and Proxa donated complete netball kits, balls, bags, stationery, and toiletry and sanitary packs, showing that dignity and participation go hand in hand.

The new gear enabled the team to participate in a local tournament in December, where they emerged victorious.

In Kromdraai, the Youthville Football Association has long been a source of pride in the community. Known for nurturing talent and keeping young

people engaged, the club received soccer kits, balls, bags, a new set of goalposts, and a grandstand for spectators.

This investment creates more than a better playing field; it strengthens the entire social fabric. With proper equipment and a designated gathering space, young people can participate more fully, families can attend to offer support, and the community as a whole benefits from the energy that sports bring.

“
Our goal was to empower young people by giving them access to opportunities that help them grow mentally, physically, and socially,” said Lindokuhle Maseko, project manager at Khwezela. “Through these sports initiatives, we are investing in confidence, teamwork, and community pride.”

Sport is about more than recreation. It's about voice, identity, and the right to be part of something bigger. At Thungela, we recognise that the right to play is part of the broader right to develop, to thrive, and to take up space in the world.



Standing with young people: A response to teenage pregnancy at Kopanang School



Teenage pregnancy continues to affect many young people across South Africa. Nationally, one in four girls becomes pregnant before the age of 20. It's a statistic that often hides the personal stories behind it, young lives interrupted, dreams put on hold, and opportunities made harder to reach.

At Kopanang Senior Secondary School in Ackerville, eMalahleni, this is a challenge they face every year. Between four and five learners fall pregnant annually. Learners with potential, plans, and hopes for the future.

Wanting to do something meaningful,

the school partnered with Greenside Colliery, Highveld Hospital, and the Mpumalanga Department of Health to host a session focused on awareness, education, and support. The goal was to help learners understand the risks of unprotected sex, the importance of consent, and how early pregnancy can affect school and future choices.

"These are young people with so much potential and dreams that end up being disrupted," said Samukelisiwe Vilakazi, Social Performance Specialist at Greenside Colliery. "The school wanted to change the pattern, and we knew the best way was to meet learners where they are, with honesty and care."

To make the conversations relatable, Nyathela Works, a local performance group, helped pass the message through creativity and humour, all while keeping the learners engaged and entertained.

"Their roleplay made tough topics relatable and used humour to drive home key lessons," said Vilakazi. "Seeing the learners laugh, engage,

and absorb the message was the best outcome we could have hoped for."

Sister Holly Mtshweni from Highveld Hospital led the session. She spoke openly and respectfully about choices and their results. She encouraged learners to think about their futures and reminded them that abstinence is the safest way to avoid unplanned pregnancies and sexually transmitted infections. Her message focused less on fear and more on protecting what is possible.

Together, the school and its partners created a space for honest conversation that respects young people, gives them tools to make better decisions, and shows them that their community believes in their future.



Partnering for progress: Thungela joins like-minded stakeholders at Mpumalanga Business Connect

Thungela recently joined government, business and international representatives at the Mpumalanga Business Connect. Held in eMalahleni, the event was hosted at the invitation of Premier Mandla Ndlovu.

The event brought together a mix of provincial leaders, members of the provincial legislature, executive mayors, chief executive officers of public entities, and international representatives such as the China Chamber of Commerce. It served as a platform to strengthen partnerships that can unlock jobs, investment, and long-term development across Mpumalanga.

In her address, the Director-General

of the Mpumalanga Province, Ms Maggie Skosana, called for greater alignment between sectors, encouraging collaborative efforts to build a thriving business environment that uplifts communities. The message of the partnership was echoed throughout the event.

For Thungela, this event highlighted the importance of working hand-in-hand with the provincial government and stakeholders to deliver a lasting impact. The Premier's vision to grow the province's economy by over 3% aligns with our commitment to driving sustainable development in the areas where we operate. As a mining company with deep roots in Mpumalanga, we understand the importance of working together to

reduce unemployment, address the energy crisis, and improve livelihoods.

Speaking at the event, the MEC for Education, Ms Cathy Dlamini, highlighted the need for private sector initiatives to align with government priorities. Thungela shares this sentiment, ensuring that every investment we make responds to real community needs and contributes to shared progress.

Our participation in forums such as the Mpumalanga Business Connect reaffirms our belief that meaningful change is possible when government, business, and communities work together.





Greenside Colliery and eMalahleni Local Municipality support informal traders in Witbank CBD

For many informal traders in the Witbank's busy Central Business District (CBD), making a living means showing up, rain or shine, often without proper shelter or infrastructure to support their work.

To help improve their working conditions, Greenside Colliery, in partnership with the eMalahleni Local Municipality, donated more than 20 gazebos, along with chairs and tables, to local traders operating in the CBD.

The initiative is part of Thungela's ongoing commitment to supporting small businesses and enhancing livelihoods in host communities.

Many of these hardworking informal traders spend long hours exposed to the harsh sun, sudden downpours, strong winds, and chilly mornings with limited protection for themselves or their goods. Without proper shelter, rainy days can mean a total loss of income, damaged stock, and discomfort for both traders and customers.

The new gazebos, along with the



chairs and tables, provide much-needed shelter, dignity, and comfort to the traders and their customers.

One of the beneficiaries, Maria Mlotshwa, who trades across from the SARS building on Botha Street, shared her appreciation.

"Thank you so much for the gazebo. I appreciate it," she expressed.

"It really helps me when it's raining, and now my customers can sit under the gazebo while they enjoy their meals. It is greatly appreciated, and I can't thank you enough."

These structures now line parts of the busy Witbank CBD, offering not just shade and shelter but also a sense of pride and professionalism to the informal economy.





Water access brings life to local agriculture in Mgewane



Reliable access to water can make the difference between growing a successful crop and watching it wither away. For small-scale farmers in Mgewane, water is not just a resource; it's a lifeline.

To help improve water security in the area, Khwezela Colliery, in partnership with Proxa, donated two Jojo tanks and gardening supplies to a local agricultural group, Auxins Farming. The group plays a key role in local food production and small-scale agricultural activity in the area.

A further three (3) Jojo tanks were donated to the broader Mgewane community, making water more accessible for everyday use and strengthening local livelihoods. This support for small-scale farmers helps them keep their crops alive. It supports food security, improves living conditions and enhances the community's ability to grow its future.





Women entrepreneurs take the lead in eMalahleni

In eMalahleni, Mpumalanga, a group of determined women, is working hard to build stronger businesses and better futures. To support them, Thungela's Zibulo Colliery recently hosted a special event for local women entrepreneurs.

The gathering created space for learning, connection, and possibility, bringing together local women with experienced leaders in business and mining to share insights, practical advice, and opportunities for growth. It forms part of Thungela's ongoing efforts to open more doors for women-owned businesses in mining communities.

"This is not just a once-off event," said Eugene Moremi, general manager at Zibulo Colliery. "it is part of an ongoing strategic initiative aimed at empowering woman-led entrepreneurs with the tools to develop and grow sustainable enterprises. The experiences shared and the insights gathered here will help to shape our future supplier and enterprise development (SED) strategies to secure continuous, meaningful progress."

The gathering featured two inspiring guest speakers. Zibu MaSotobe Sibiya, a businesswoman and founder of Zoluhle Group and international speaker with more than a decade of experience helping corporates develop and implement strategies to

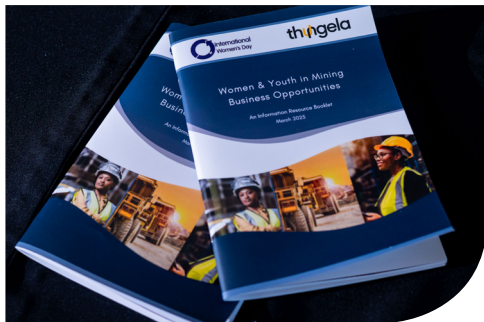


improve efficiency and profitability, shared practical tips on how to overcome business challenges and manage finances.

Meanwhile, Thando Maseko, a mining engineer with 13 years of industry experience, director of Inayo Mining, and non-executive director of Overlooked Colliery and BRSW Consulting shared her journey of building a successful mining business and offered advice on how to grow and expand a business.

The day didn't end with inspiration. In a tangible show of support, two women received business starter kits, including laptops and printers. Others had the chance to meet with Thungela's procurement team to explore future business partnerships.

As part of its commitment to inclusive procurement, Thungela is working to increase the participation of women-owned enterprises in its supply chain, creating space for meaningful contribution and long-term growth.



In Phola, men are taking a stand against gender-based violence and femicide



In South Africa, gender-based violence and femicide (GBVF) continue to harm too many lives and often in silence. It happens behind closed doors, in relationships, at schools, in workplaces, and sometimes even in the name of tradition. In Phola, a different story is starting to take shape as men choose to be part of the solution.

More than 110 men gathered recently in Phola, eMalahleni, for a man-to-man dialogue. Hosted by Zibulo Colliery, in partnership with the SoGutjhe Royal House and the Men of Truth Foundation, the event gave men a rare opportunity to speak openly about who they are, how they were raised, what they believe about respect, emotion, and power, and how they want to do better.

The event was a moment of reflection and a space to break cycles.

The idea grew from the SoGutjhe Royal House's 'We Love Our Boys' campaign, which aims to raise boys who become whole, grounded men.

"It is important to recognise that conversations about GBVF often focus

on women and girls, but engaging men is just as critical," said Linda Dlodlu, social performance manager at Zibulo Colliery. "These dialogues are about giving men the language, confidence, and support to unlearn old beliefs and become protectors, not perpetrators."

Sihle Nkomo, human resources manager at Zibulo, echoed this: "It starts with us. We have to challenge harmful behaviour, raise our sons with respect, and teach our daughters to expect it too."

The day brought together people and organisations that care deeply, from the Mpumalanga Department of Health

and Reality Wellness to the local municipality, police, taxi association, and foundations supporting victims of crime. Each voice added something, and each presence made a statement that this issue belongs to all of us.

Ikosi Sipho Mahlangu spoke with quiet conviction: "When we come together like this, we show our boys and our communities that change is possible. We see what is happening, and we are willing to face it. Together."

In Phola, the conversation has started. With it, the hope is that fewer women will suffer in silence and more men will step forward for change.





Nkulo Trust elevates healthcare at Witbank Tertiary Hospital



Quality healthcare is a cornerstone of thriving communities, and when regional hospitals are equipped to deliver, the benefits extend beyond the ward.

To enable Mpumalanga's key referral hospitals, Nkulo Community Partnership Trust formally handed over a donation of essential medical supplies valued

at R6 million to the Witbank Tertiary Hospital. The hospital serves high-care patients across the Nkangala district and plays a critical role in the province's healthcare system.

The donation consisted of 20,000 linen and sleepwear items (2,500 each), including bed sheets, drawer sheets, pillows, pillowcases, bunny blankets, pyjamas, nightdresses, and small bedspreads; as well as 201 medical equipment items (67 each), comprising retrieval bags, Lap FRC410 units, polymer clips (L, purple), and polymer clips (M, green).

With an average of 20 high-care admissions daily, the hospital faces ongoing pressure as many of these patients require prolonged stays

due to severe medical conditions.

This contribution reflects Nkulo Community Partnership Trust's commitment to enabling key public institutions to function more effectively and sustainably. By investing in public healthcare infrastructure, the Trust supports broader social development, resilience, and equity goals across the communities connected to Thungela's operations.

Nkulo Community Partnership Trust serves communities in the eMalahleni, Steve Tshwete, and Govan Mbeki local municipalities, as well as key labour-sending areas, playing a vital role in translating mining-linked value into wider community benefits.



A fresh start for Thandanani Centre

The Thandanani Centre in Bethal, part of the Govan Mbeki Local Municipality, has long been a place of care and community. It houses four non-profit organisations that support local residents with healthcare, youth programmes, elder care, and daily assistance.

Over time, the building began to show signs of wear and needed attention. In response, Isibonelo Colliery partnered with the community to renovate the facility, giving it a much-needed fresh start.

The upgrades include newly

painted interiors, improved ablution facilities, and secure fencing. These improvements have made the centre more functional, safer, and more welcoming for those who rely on it every day.

The centre is home to Philasande Health, the Lethi Thembe Drop-in Centre, the Sesfikile Youth Centre, and a support centre for the elderly. Each plays an important role in the wellbeing of Bethal's residents.

For the community, this renovation brings renewed dignity to the people

who use the space, especially the elderly, youth, and those seeking healthcare. It offers better access to essential services in a clean and safe environment, and it restores a sense of pride, trust, and shared ownership. It's a reminder of what's possible when people work together.

Thandanani is now ready to continue its role as a trusted space for care, connection, and community support, stronger than before, and more grounded in the spirit of collaboration.



Supporting early childhood development in Clewer



At Thungela, we recognise that a strong foundation in early childhood lays the groundwork for future learning and success. That's why Khwezela Colliery, in partnership with Proxa and Mphikeleli, supported a local early childhood development centre in Clewer in eMalahleni Local Municipality.

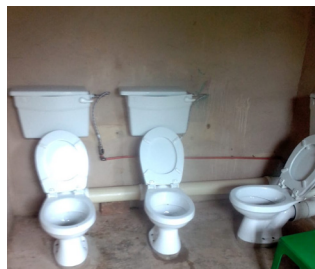
The goal was simple: to improve the learning environment for both children and educators by providing resources

that are age-appropriate, functional and safe.

Through this initiative, Khwezela Colliery donated classroom equipment, including child-sized tables and chairs, sleeping mattresses for naptime, and additional furniture to support the teachers' work. These additions are helping to create a more comfortable and supportive space where young children can grow, play and learn.

In response to the need for improved infrastructure, our contractor partner, Mphikeleli, refurbished and installed new sanitation facilities specifically designed for young learners, ensuring safer and more hygienic conditions.

This collaboration has transformed the centre into a space where children can feel secure and enriched and where educators can focus more fully on quality care and early learning.



A fresh new start for learners at Impilo Primary School

In Kriel, 271 learners are now learning in a safe, inspiring, and purpose-built space that fosters their growth, thanks to a significant investment made by Goedehoop

Colliery into Impilo Primary School.

This project arose in response to years of concern over the deteriorating state of Springbok Primary School, which

was established in the 1980s. Due to aging infrastructure it became a target of theft and vandalism, creating unsafe conditions for learners and educators.

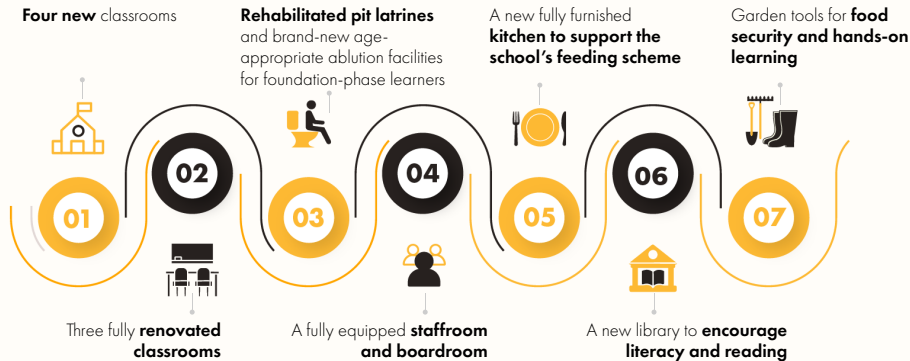


“Both Thungela and the Department of Basic Education were deeply concerned about the safety and learning conditions for the learners and teachers,” said Marcia Mabuza, social performance specialist at Goedehoop. “We knew we had to find a solution that would serve both the learners and teachers better.”



That solution took the form of a R6 million investment into nearby Impilo Primary School. This more secure and accessible site could be upgraded and expanded to meet the community’s needs.

The revitalised school now includes:



The official handover ceremony was attended by the MEC for the Mpumalanga Department of Education, heads of department, as well as the school and school governing body representatives.

“The new classrooms, renovated facilities and essential resources were handed over along with our future investment in the learning environment will serve as the foundation upon which many bright futures will be built,” said Goedehoop Colliery general

manager Tman Mphokane.

The upgraded school is now part of the Thungela Education Initiative, a five-year programme that supports 45 primary schools across Thungela’s three host municipalities. The initiative focuses on foundational literacy and numeracy, Grade R readiness, enhancing teaching quality, and developing school leadership.

“Education is the heartbeat of any nation,” added Mphokane. “But for

learning to thrive, it must take place in an environment where children feel safe, inspired, and supported and where educators are empowered to do their best work.”

For Thungela, this project is not just about rebuilding a school but about investing in the future engineers, scientists, entrepreneurs, teachers, and leaders of South Africa. It’s a step towards making quality education a reality, where it matters most.

School incubator programme continues to empower matric learners



Since 2014, Isibonelo Colliery's incubator programme has been helping learners improve their matric results, especially in mathematics and science. The programme offers special classes on Saturdays and during school holidays in english, mathematics, physical science, and life science. These extra lessons give learners support and resources they don't always get at school.

"Right from the beginning, the incubator programme aimed to improve the region's historically low matric pass rates, particularly in maths and science," said Mpumi Sithole, executive head of corporate affairs. "The objective is no longer just to help learners pass, but to help them pass with outstanding results that would give them the power to transform their lives."

1,203 out of 1,204
matriculants have
successfully earned their
national senior certificates
since the programme began.

100% of the 84
matriculants in the
programme achieved
bachelor's passes in 2024,
qualifying them for admission to
higher learning institutions.

95 distinctions were
achieved in 2024 in
these subjects alone.

Every learner
passed all four of the
programme's core subjects.

The top learner, Somelele Thafeni, earned seven distinctions and is now studying towards mining engineering. Close behind Thafeni were Happy Mtsweni, Nonhlanhla Hlatshwayo, Gerald Khaba and Malefetsane Radingoane who each earned six distinctions.

Since the programme started, it has contributed to the Gert Sibande district achieving a record pass rate of 87%.

These results show that with hard work and the right support, learners can reach their goals and build a better future.



The lifecycle of a mine

Understanding the life of a mine

Did you know?



Mining is a journey that follows a natural life cycle, from discovery development to production and responsible closure and land rehabilitation, just like farming, building, or any other work that uses land with care and responsibility. Depending on the type and amount of resources available, this natural life cycle can be short or span decades. Regardless of duration, responsible mining always considers long-term environmental and community impacts.

The life of a mine usually follows these phases:



In this series of Umphakathi, we will walk through each part of the mining journey so that together, we can better understand how land and communities are supported throughout the process.

Phases and what happens:

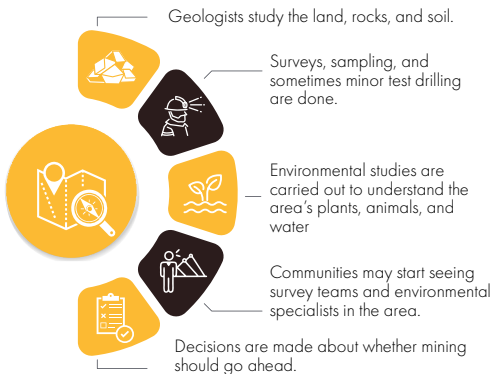


1 DISCOVERY (EXPLORATION PHASE)

What it is:

This is the search for minerals beneath the earth's surface. It's about understanding what is in the ground and whether mining is possible and responsible.

What typically happens:



2 DEVELOPMENT (PREPARATION PHASE)

What it is:

If the mineral deposit is good and mining is possible, the mine is prepared. This phase includes building the structures and systems needed for safe, legal mining.

What typically happens:

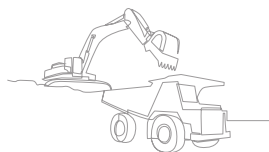


3 PRODUCTION (MINING PHASE)

What it is:

This is the active phase, during which minerals are extracted from the Earth. Mining operations run daily.

What typically happens:



Minerals are mined, processed, and transported for use.



Closure planning is updated regularly as operations change.



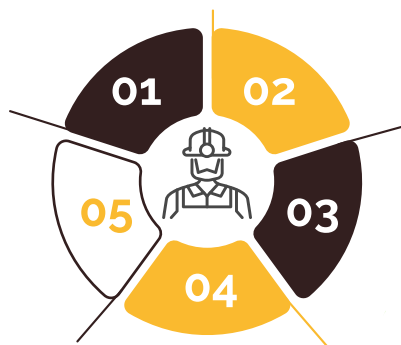
A large number of people are employed, including workers, contractors, and service providers.



Surveys, sampling, and sometimes minor test drilling are done.



Environmental studies are carried out to understand the area's plants, animals, and water.



4 CLOSURE AND RENEWAL (POST-MINING PHASE)

What it is:

Once mining is complete or no longer economically sustainable, the land is restored, and activities shift to preparing the area for new opportunities.

What typically happens:

	Equipment and buildings are removed safely.	
	Land is reshaped to natural contours.	
	Water systems are protected.	
	Indigenous plants are replanted.	
Plans for farming, conservation, tourism, or other new uses are developed.		
Communities are supported with skills programmes and economic transition opportunities.		
The mine applies for a closure certificate after meeting strict legal and environmental requirements.		
The land enters its next chapter , supporting future generations.		

Each phase is important and is carefully planned.

Stay with us!

In the next editions of Umphakathi, we will explore how each phase is carefully planned, what international standards guide responsible mining practices, and how effective closure practices can open new opportunities for communities, the environment, and future generations.

Old gumboots, new purpose: How mining waste became school shoes

For hundreds of learners in Mpumalanga, receiving school uniforms and essential supplies has done more than meet a need but restored a sense of dignity, confidence, and belonging in the classroom. Through an education support drive led by Khwezela and Goedehoop Collieries, learners are showing up not just dressed for school, but ready to thrive.

In eMalahleni, Khwezela Colliery, in partnership with contractor Zizwe, rolled out a school shoe drive that reached Phakama Primary School, Witbank Primary School, and Kopanang Secondary School. Working closely with local Ward 10 and Ward 17 Councillors, the team identified learners from families in need and delivered shoes and hygiene packs just in time for the first day of class.

"A school shoe may seem like a small thing, but it's often what makes a learner feel prepared, included, and ready to focus," said Samukelo Hlophe, project manager at Khwezela Colliery.

In Blinkpan, Goedehoop Colliery partnered with contractors to donate 125 full uniform packs to the school. The donation valued at R234,506, included shoes, socks, shirts, jerseys, trousers, and skirts along with rechargeable lights to help learners study at home.

What set this donation apart was its combination of educational support with innovative waste management solutions.

Seventy-five (75) of the school shoes handed over at Blinkpan Primary School were made from recycled



gumboots, the very ones once worn by mineworkers underground. Through a partnership with Zibulo Colliery and a local pyrolysis company, used gumboots were collected, broken down into PVC granules, and then repurposed into durable shoe soles. To date, the initiative has processed over 1,500 pairs of gumboots, transforming mining waste into a valuable and lasting product.

“Every shoe in this programme carries two stories, one of a learner going to school equipped, and one of a material given a second life,” said Tman Mphokane, general manager at Goedehoop Colliery.

“This project shows what’s possible when environmental innovation and social impact come together. It’s a practical example of how mining can do more with what it has and give more back.”



Complaint | Grievance procedure and contacts

Thungela maintains a reliable system for community members to submit complaints and grievances. This process ensures that the respective colliery will acknowledge any complaints and grievances within 24 hours and respond within no more than five business days of receipt. Community members are encouraged to use the official channels provided by Thungela to voice their concerns and complaints, promoting transparent and efficient communication between the mine and residents.

How to contact us in writing	
Goedehoop faith.mashego@thungela.com	Zibulo north shaft project Msizi.myeni@thungela.com
Zibulo zibuloengagement@thungela.com	How to contact us in person
Mafube nonkululeko.msinga@thungela.com	
Isibonelo isisp@thungela.com	
Khwezela lindokuhle.a.maseko@thungela.com	
Greenside lebogang.raboshakga@thungela.com	
Elders Musa.Mitileni@thungela.com	
Provide the following information:	
Date and time	Your name and contact details
Nature of complaint	
Resolution sought	

Visit our website and social media pages for more information:

 www.thungela.com

 Thungela

 Thungela